

✓  
Bedford County

W<sup>illiam</sup> Pew  
now

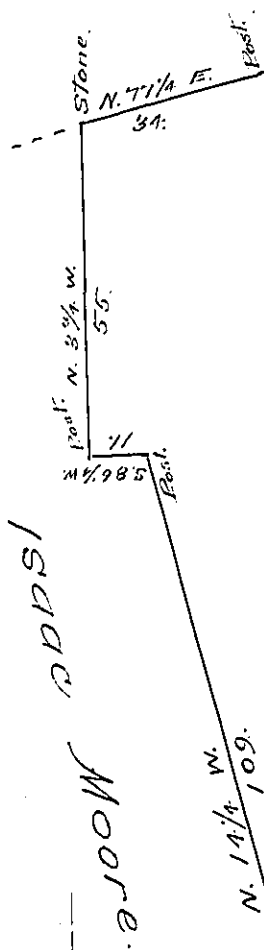
Geo. Rice

416<sup>95</sup> - 145<sup>P</sup>

Ret'd. 10<sup>th</sup> of May 1849.

Accepted 18 Nov<sup>r</sup>, 1848

- 287.



of Land  
perches  
Lancaster  
uel Pool  
ember

To Ar  
Sur

IN TEST